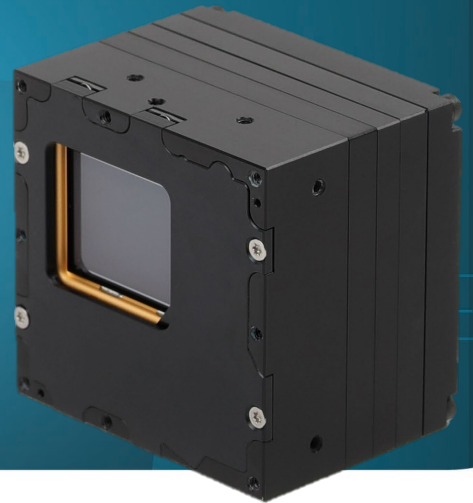


**HIGH-RESOLUTION UNCOOLED
THERMAL CORE**

Xenics
EXOSENS GROUP

Crius XP S 1280 Series (NEW)



*EXTREME PERFORMANCE SXGA
SHUTTERED THERMAL CORE*

KEY FEATURES



**UNCOOLED WITH MECHANICAL
SHUTTER**



**CONTOUR ENHANCEMENT: SHARPER DRI
AND SUPERIOR OBJECT CLARITY**



**COLUMN AND TEMPORAL DENOISING:
NETD halved from 40 mK to 20 mK**



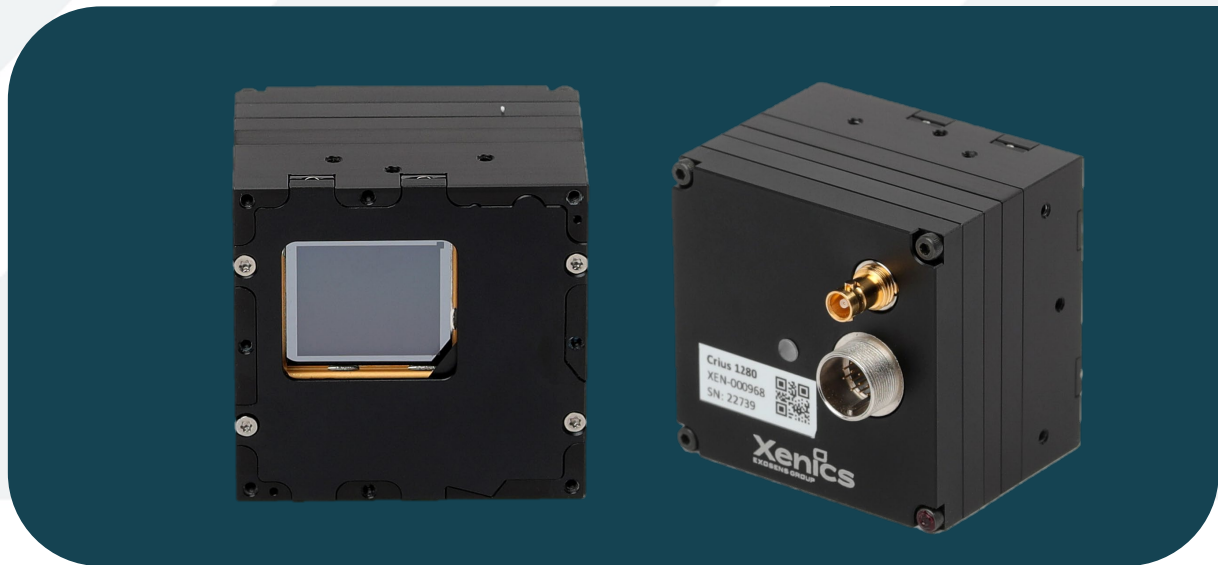
**CONTRAST SHARPNESS CORE FOR
AUTOFOCUS MANAGEMENT**

The Crius XP (Extreme Performance) S 1280 is a high-performance LWIR thermal imaging core featuring 1280×1024 resolution, 12 μm pixel pitch, and a NETD below 20 mK. With a mechanical shutter and advanced contour enhancement, it delivers superior image clarity and enhanced DRI capabilities.

Its compact, low-SWaP design and flexible interfaces make it ideal for integration into mission-critical systems, including search and rescue, border surveillance, and infrastructure protection.



Crius XP S 1280 Series (NEW)



KEY PERFORMANCES

Sensor	Micro-bolometer technology
Resolution / Pixel Pitch	1280 x 1024 pixels / 12 μ m
Spectral Range	8 – 14 μ m
Max NETD (F/1 ; 300K ; 30 Hz)	< 20 mK with denoising
Operating temperature range	-40°C to +70°C
Power consumption (DF40)	< 2.8 W (DF40); < 4.5 W (SDI); < 3.0 W (MIPI CSI-2)
Qualification	MIL-STD-810G – Method 514 Vibration: 10Hz - 2kHz 13.95g per axis 10h per axis

FUNCTIONS & INTERFACES

Image processing	BPC (Bad Pixel Correction), NUC (Non-Uniformity Correction), AGC (Automatic Gain Control)
Image optimisation	AGC (Automatic Gain Control)
Output options	DF40, SDI, MIPI CSI-2
Dimensions (L x B x H)	46 x 47 x 27 mm ³ (DF40); 46 x 47 x 43 mm ³ (SDI); 46 x 47 x 31 mm ³ (MIPI CSI-2)
Shutter options	DF40, SDI, MIPI CSI-2
Weight	<130 gr (DF40); <126 gr (SDI); <105 gr (MIPI CSI-2)

advancedimaging@exosens.com



exosens.com

EXOSENS
REVEAL THE INVISIBLE

© Xenics. The information furnished is believed to be accurate and reliable, but is not guaranteed and is subject to change without notice. No liability is assumed by Xenics nor by any Exosens Group companies. Performance data represents typical characteristics as individual product performance may vary. Customers should verify that they have the most current Xenics product information before placing orders. Texts and pictures may not be considered as contractually binding. This document may not be reproduced, in whole or in part, without the prior written consent of Xenics.