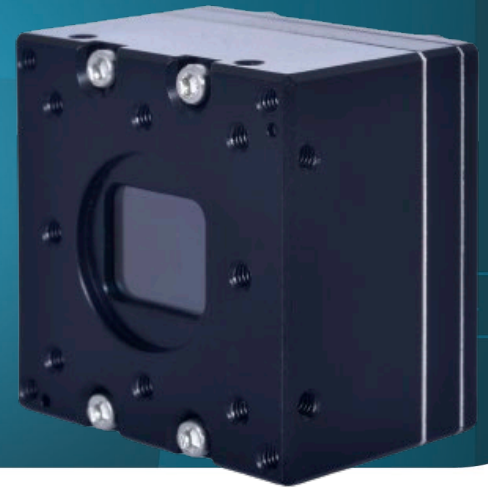


**HIGH-RESOLUTION UNCOOLED
THERMAL CORE**

Xenics
EXOSENS GROUP

Crius 640 Series



*ULTRA-COMPACT VGA
THERMAL IMAGING CORE*

KEY FEATURES



**VERY HIGH RESOLUTION - 12 μ m
FOR BETTER DRI RANGES**



**SMALL, LIGHT & LOW POWER
CONSUMPTION**

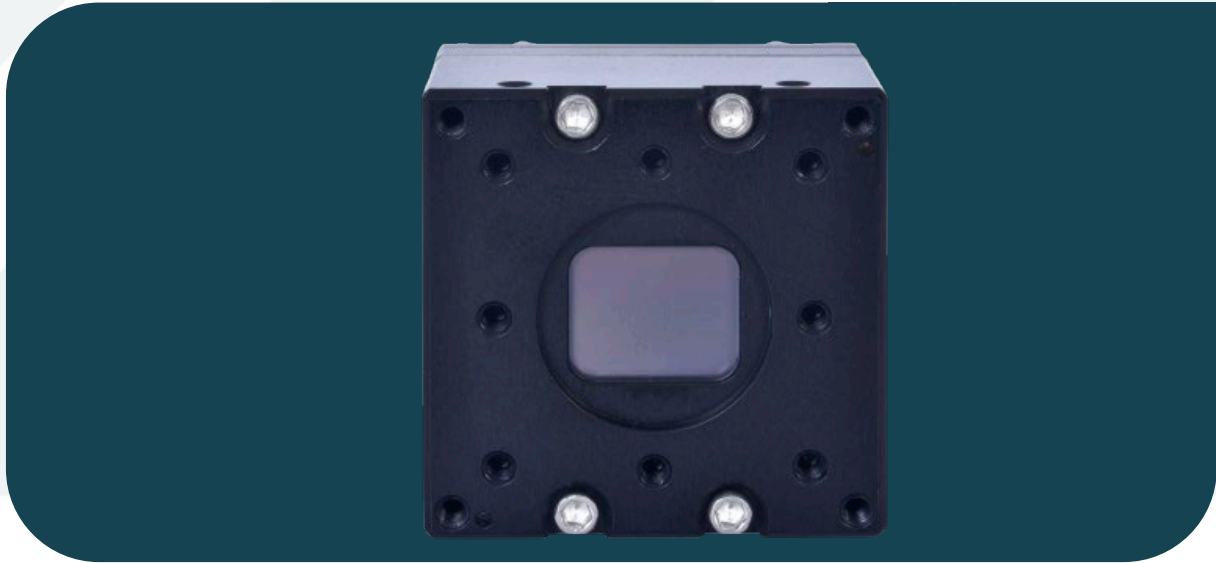


FRAME RATE UP TO 60 FPS

Thanks to its amazing compactness and the outstanding resolution, Crius series enable enhancement of electro optical-systems performances: major benefit is DRI (Detection Recognition Identification), a key factor for long range observation platforms in Search and Rescue or surveillance of sensitive areas for plants, border.

Its generic design ensures easy integration and retrofit of existing E/O systems in defense and security.

Crius 640 Series



KEY PERFORMANCES

Sensor	Micro-bolometer technology
Resolution / Pixel Pitch	640 x 480 pixels / 12 μ m
Spectral Range	8 – 14 μ m
Max NETD (F/1 ; 300K ; 30 Hz)	< 50 mK or < 40 mK
Operating temperature range	-40°C to +70°C
Power consumption (DF40)	< 1.2 W
Qualification	Industrial (Standard grade)

FUNCTIONS & INTERFACES

Image processing	BPC (Bad Pixel Correction), NUC (Non-Uniformity Correction), Shutterless NUC
Image optimisation	AGC (Automatic Gain Control)
Output options	CL, SDI, DF40
Additional option	On DF40: Handheld/manual control interface + micro display interface
Dimensions (L x B x H) (DF40)	30 x 30 x 23 mm ³
Weight (DF40)	< 38 g

PRODUCT SELECTOR GUIDE

XEN-000920 [Crius 640 50 mK (60 Hz)]	XEN-000921 [Crius 640 50 mK (9 Hz)]
XEN-000922 [Crius 640 40 mK (60 Hz)]	XEN-000923 [Crius 640 40 mK (9 Hz)]

advancedimaging@exosens.com



exosens.com

EXOSENS
REVEAL THE INVISIBLE