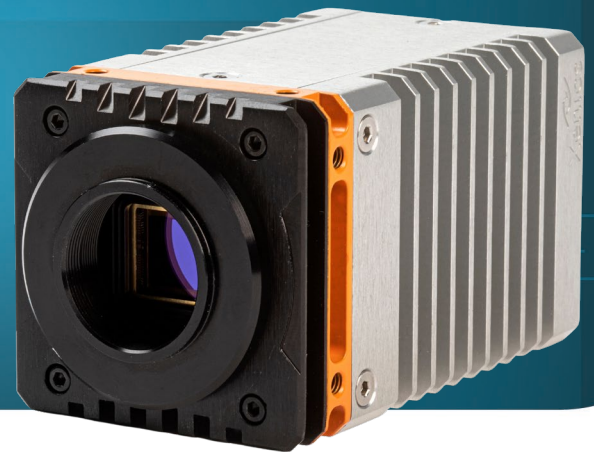


Wildcat+ 640 TE0 and WL Series



HIGH-RESOLUTION SWIR CAMERA

KEY FEATURES



HIGH-RESOLUTION SWIR IMAGING



INDUSTRY PROVEN CAMERA DESIGN



**FLEXIBLE OPTICAL MOUNT &
LENS OPTIONS**

The Wildcat+ 640 TE0 and WL series is based upon a state-of-the-art uncooled InGaAs detector with 640x512 pixels and 20 μm pixel pitch. The WL version uses a special windowless sensor package for laser beam analysis applications.

The camera offers superior, high-resolution SWIR imaging capabilities, comes in a versatile and industry-proven Wildcat camera package (GenICam compliant) and offers advanced on-board image processing. The Wildcat+ 640 TE0 and WL cameras output full frame images at 220 Hz via either a CameraLink or USB3 Vision interface.

Wildcat+ 640 TE0 and WL Series



KEY PERFORMANCES

Image format / Pixel pitch	640 x 512 pixels / 20 μ m
Detector type	InGaAs photodiode array with CTIA ROIC (WL version comes without detector cover glass)
Integration type	Snapshot - global shutter
Spectral range	900 - 1700 nm
Max frame rate (full frame)	220 Hz
Power consumption	<7 W
Power supply voltage	DC 12 V

FUNCTIONS & INTERFACES

Command and control	CameraLink Base or USB3 Vision
Connector trigger	Lemo 1B.308 (unified connector)
Camera dimensions (width x height x length)	55 mm x 55 mm x 72 mm (CL); 55 mm x 55 mm x 91.5 mm (U3V)
Optical interface	C-mount or M42
Camera weight	316 gr (CL); 358 gr (U3V)

PRODUCT SELECTOR GUIDE

XEN-000721 (Wildcat+ 640 TE0 CL 200)	XEN-000719 (Wildcat+ 640 TE0 U3V 200)
XEN-000722 (Wildcat+ 640 WL CL 200)	XEN-000720 (Wildcat+ 640 WL U3V 200)

advancedimaging@exosens.com



exosens.com

EXOSENS
REVEAL THE INVISIBLE