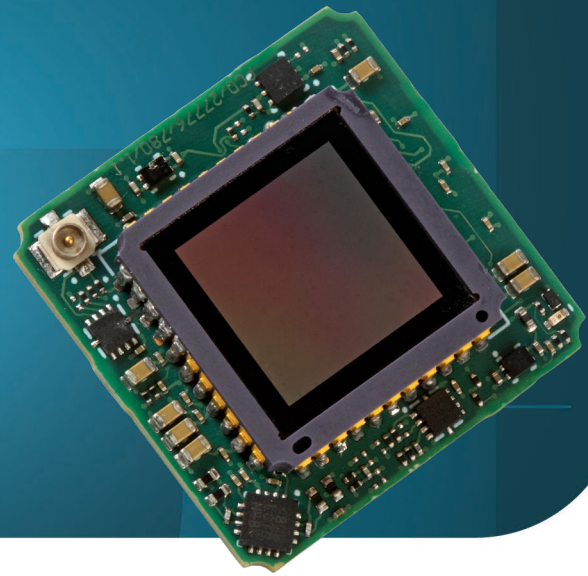
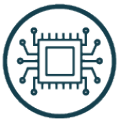


Dione 320 OEM Series



UNCOOLED THERMAL IMAGING SWaP MODULE

KEY FEATURES



**STATE-OF-THE-ART DETECTOR
WITH 12 µm PIXEL PITCH**



**INDUSTRY LEADING LOW SWaP
(SIZE, WEIGHT AND POWER)**



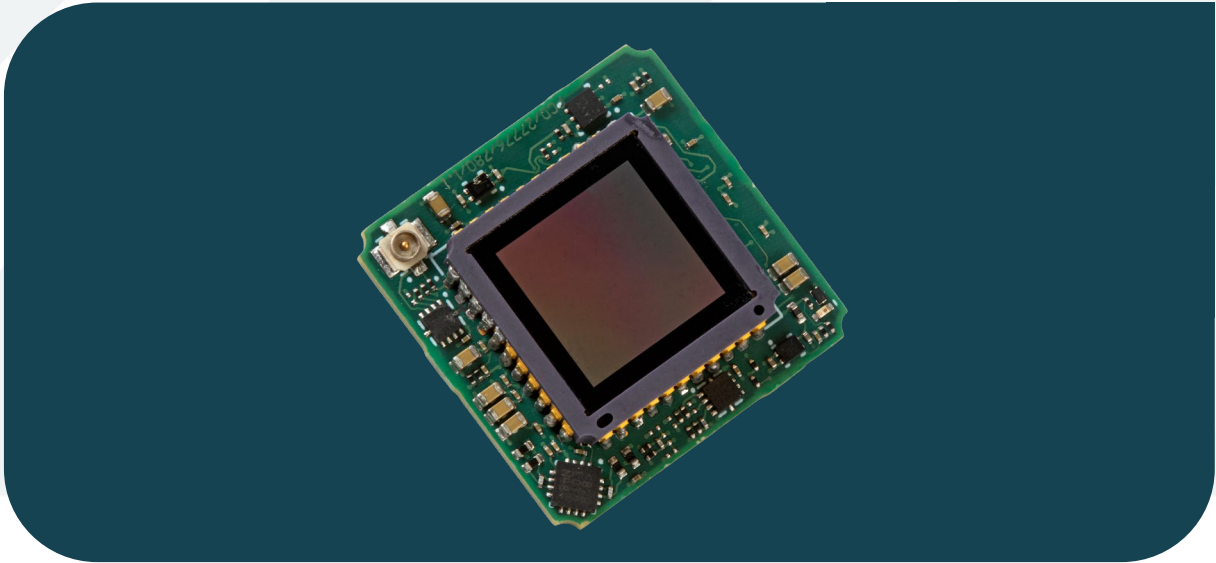
FRAME RATES UP TO 60 Hz

The Dione 320 OEM is based on a state-of-the-art detector with a 320×240 pixels and 12 µm pixel pitch. The NETD is less than 40 mK (available upon request) or 50 mK.

The cores are optimized for low SWaP (Size, Weight and Power). It utilizes Xenics image enhancement for advanced image processing while keeping power consumption low.

All Dione 320 versions have the same SAMTEC ST5 connector and are GenICam compliant. The compact Dione 320 OEM series find application in industrial machine vision, medical, scientific and advanced research, safety and security systems.

Dione 320 OEM Series



KEY PERFORMANCES

Image format / Pixel pitch	320 x 240 pixels / 12 μ m
Integration type	Rolling shutter
Spectral range	8 - 14 μ m
Max frame rate (full frame)	60 Hz
Power consumption	570 mW (at 60 Hz operation; 16bit DV)
Power supply voltage	DC 5 V

FUNCTIONS & INTERFACES

Digital output format	16bit DV (standard), MIPI CSI-2 (optional)
Operating temperature range	From -40°C to +70°C
Storage temperature	From -45°C to +85°C
Detector NETD	<40 mK (at 60 Hz, 300K, F/1), available upon request or <50 mK (at 60 Hz, 300K, F/1)
Shock / Vibration	40 g, 11 ms, MIL-STD810G / 5 g (20 to 2000 Hz), MIL-STD810G

PRODUCT SELECTOR GUIDE

XEN-000791 (Dione 320 OEM 40 mK)	XEN-000789 (Dione 320 OEM 50 mK)
----------------------------------	----------------------------------

advancedimaging@exosens.com



exosens.com

EXOSENS
REVEAL THE INVISIBLE